

Affordable Alternative Powerful Solution



FrontierSawmills.com



THE LEGACY OF NORWOOD SAWMILLS

...BEGINS WITH A DREAM



Over a quarter century ago,

Norwood Sawmills founder Peter Dale took action to turn his long-held desire for a cabin in the woods into a reality.

But there was a problem.

Between the cost of lumber and the existing portable sawmills at that time, there was no way he could manage the cost.

So, he did what forward-thinking entrepreneurs have been doing for hundreds of years. **He found his solution by building his own band sawmill.**

Even then, he set the bar high. The sawmill had to be done right. In addition to being affordable, it had to be strong, reliable, and accurate.

Peter Dale never settled for average. He understood and was prepared to spend the necessary time on design, testing, and refining his concept.

His efforts positioned Norwood Sawmills as a leader in their market.

AND THAT LEGACY LIVES ON TODAY.

// Meeting the Need. **EXCEEDING EXPECTATIONS.**

Peter Dale set the standard for novel designs, innovative technology, and simple yet effective mechanical concepts applied in creative ways.

Through the years, Norwood has consistently met the needs of sawyers around the world with well-thought out designs.

Today, Norwood Sawmills has more than fifty patents on innovative yet practical personal sawmills and components, more than ALL other sawmill companies in the world combined!

Norwood has sawmills in service in more than 100 countries, performing steadily since early 1993 without any issues, a testament to Norwood's ongoing commitment to quality and dependability.

AT NORWOOD, WE'VE NEVER BEEN AFRAID TO TAKE ON A CHALLENGE.

We believe it is of utmost importance to listen to our Norwood family of sawmill users. But we also listen to the comments, questions, and suggestions of those who are still waiting to invest in their first Norwood sawmill.



You Asked. We Listened. And This Is the Result...
INTRODUCING FRONTIER PORTABLE SAWMILLS BY NORWOOD



// YOU SPOKE AND WE LISTENED.

For years, we've sat back watching other companies produce portable sawmills offshore that were cheaply made and of inferior quality.

We resisted this track for a long time. But there's no denying the number of people we've heard from, imploring us to produce an even more affordable sawmill.

This wasn't an easy decision for us. We believe strongly in our country, and the workmanship of our skilled staff.

But we continued to hear from more and more people who tried other brands of sawmills manufactured offshore and were deeply disappointed in the flimsy construction and poor performance.

We realized you deserve so much more.

And we couldn't just sit by and ignore the obvious need for a more affordable entry-level portable sawmill.

After a lot of thought, numerous intense discussions, months of strategic research and design, and yes, some sleepless nights, we realized we had an obligation to all of those waiting for their first Norwood, who needed an option we didn't have until now.

**TODAY WE'RE
HERE TO SAY...**

**"IF YOU'RE GOING TO DO IT, DO IT
WITH SOMEONE YOU TRUST!"**



Tow your sawmill from site to site.
An optional trailer system is available for every Frontier model.

FRONTIER PORTABLE SAWMILLS

are our first and only sawmills manufactured outside of North America.

AND, AS ALWAYS, WE KNEW IF WE WERE GOING TO DO THIS, WE WERE GOING TO DO IT RIGHT.

Frontier Sawmills Are Your **BEST** Choice...
Because We Do It BETTER!



- 1 **EZ blade tension** – Just turn the “T”-handle and saw. Frontier is the only sawmill in its class that gives you **NO** frustrating disruption of bandwheel alignment every time you change blades.
- 2 Large 19” diameter cast-iron bandwheels on the **OS27** and **OS31** for **greater torque and increased blade life**.
- 3 Frontier sawmills delivers the highest production volumes in their class thanks to Norwood’s **patented auto-locking sawhead**, a feature that saves you hours of tedious repetitive operations.
- 4 The backbone of Frontier sawmills is Norwood’s **patented laminated sawhead construction** giving them the strongest and most rigid-possible core.
- 5 **Durable wear-resistant vertical guide blocks**.
- 6 A **full-size 144” band blade** on the **OS27** and **OS31** for increased blade life.
- 7 **Customizable** – Trailer, patented auto-lube system and cam-dog available.
- 8 **Strong box-beam cross-bunks**.
- 9 Precision **laser-cut track**.



- Norwood created ALL elements of the design using our high standards of **innovative engineering**.
- Frontier Sawmills are built to **rigorous international safety standards**.
- Norwood’s **quality-assurance team** inspects all Frontier sawmills.

BUT WAIT... THERE'S MORE!

- Frontiers are **safer and more stable** in the cut:
- We use **more material to build a heavier sawmill**.
- The sawhead and carriage are **more robust**.
- The entire sawmill is **powder-coated** or **zinc-plated**.
- Frontier **gives rough-sawn a whole new meaning!**
- They're **easier to put together** because the sawhead is already assembled.
- Norwood is known for the "**smoothness**" of **operation** and "**smoothness**" of the **sawn lumber**. The Frontier is as close as you can get from ANY mill built outside of North America.
- You are protected by our ONE-YEAR non-commercial warranty.

// Even LumberJack Gives Frontier Two Thumbs Up!



And that's why we say to anyone looking at getting a sawmill made offshore ...

"Don't risk it. If you're going to do it, do it with US!"

We realize the Frontier may not be for everybody. But we also know we are serving a lot of folks who might not be able to afford a premium-quality "Made in North-America" **Norwood** Portable Sawmill, and **need this option**.



FRONTIER IS FOR YOU IF...

- You're shopping for the best price because you **need to save money**.
- You're a "**hands-on**" kind of person, but not necessarily a professional.
- You're planning to use your sawmill for personal and family projects.
- You're a **beginner sawyer** who appreciates a trusted company that has specialized in portable sawmilling for a quarter century and has a reputation for delivering innovation and reliability.
- This is **your first portable sawmill**.
- You're looking for a basic mill that's easy to use.
- You're excited to start with **rough-sawn projects** like cabins, shelters, and sheds.
- You value premium-quality work done here at home, but don't feel you can justify the slight extra cost right now.
- You're **independent, smart, and want the most mill for your dollar**.



Frontier Sawmills Are The SMART Choice... Because You Get Norwood Innovation

Let's face it – A lot of companies claim they're the "best" at something. But what does that mean exactly?

It's way more than a glossy coat of paint, and some flashy advertising. So, let's talk facts.

FACT #1:

It takes substance – an unshakable commitment to innovation, creativity, quality and implementation – to rise to the top as the best.

And, at Norwood, we've proven that "substance" is deeply ingrained in everything we do. In other words, we don't simply talk it. We DO it, just like this...

FACT #2:

Norwood's well-earned reputation as the global leader in portable sawmill innovation is supported by a solid foundation of over 50 patented inventions.

That's why we've included some of our best in the Frontier line...

FACT #3:

Frontier sawmills are so well-engineered, they lead the way in a class of their own, ahead of any other offshore sawmill.

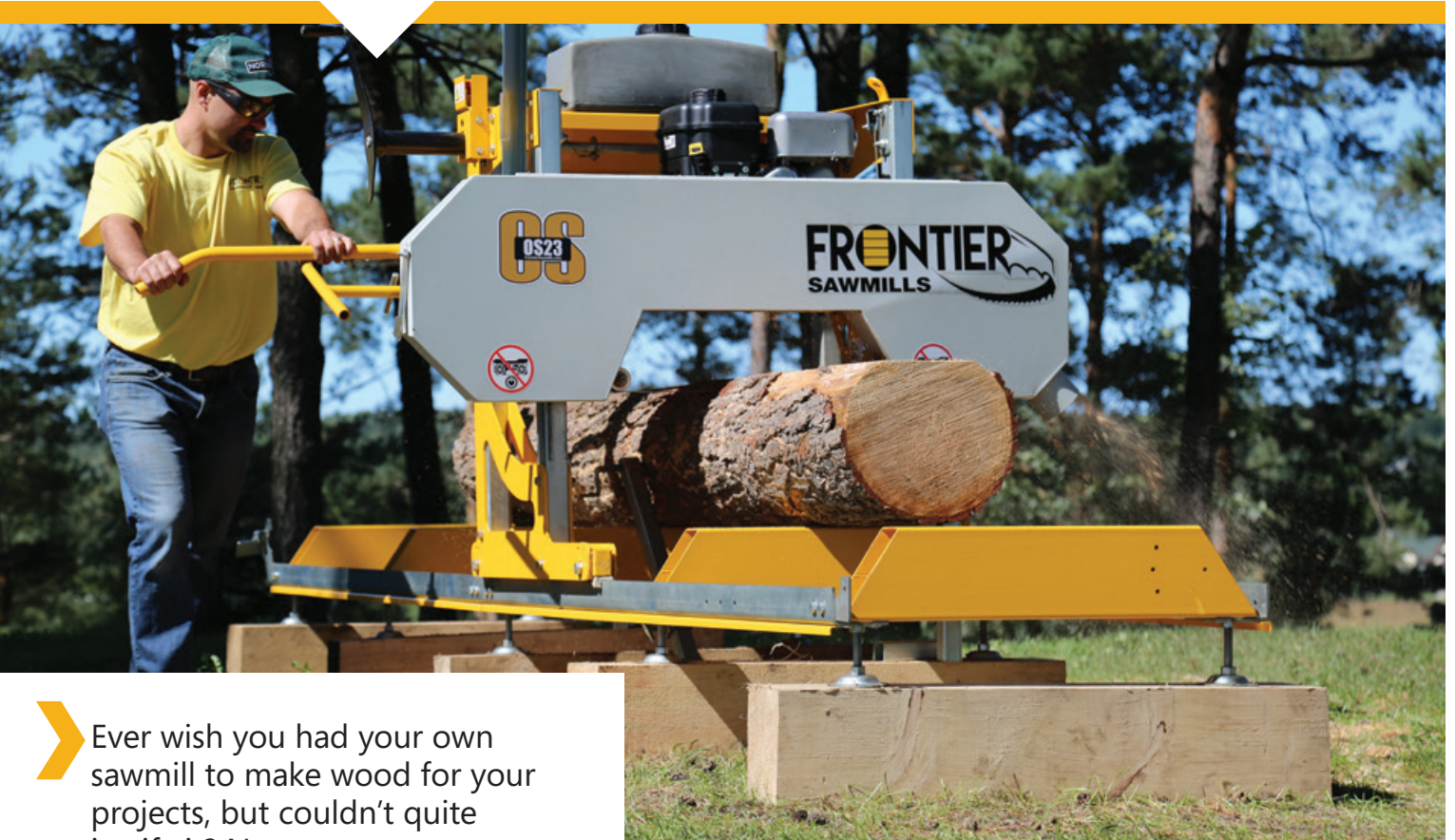
Created from the enduring reliability of Norwood innovation, they're tough little mills at an affordable price. You can depend on it.



U.S. Patent Nos. 7,784,387, 8,215,216, 8,276,493, 8,261,647, D818013, D816742 & D831711;
Canada Patent Nos. 2,488,216, 2,687,619, 2,687,622, 2,688,407, 169785, 169786, 169787 & 169788;
EU Patent Nos. EP 2,332,683 B1, 003736255-0001, 003736255-0002, 003736255-0003 & 003736255-0004;
China Patent Nos. 4192870 and 201630653054.8; Australia Patent No. 201710614, 201710616 & 201710615;
Other patents pending in multiple jurisdictions.



The World's ONLY Fully-Portable Compact Band Sawmill.



Ever wish you had your own sawmill to make wood for your projects, but couldn't quite justify it? Now you can.

... The Frontier OS23 is your answer.

So affordable, it's hard to justify why you *shouldn't* have it. Yep, it's time to let the sawdust fly.

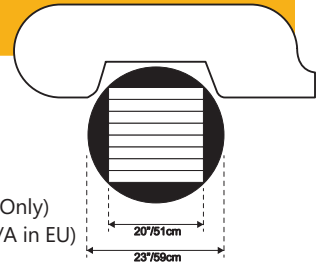
Satisfyingly solid, gratifyingly rewarding, and best yet...you can trailer it!

Finally ...
Forest, Fun & Freedom are yours!



OS23 TECHNICAL DATA OVERVIEW

Log Diameter	23" (59cm)
Log Length	11' (3.4m) (or longer with extensions)
Board Width	20" (51cm)
Power Selections	7 hp (208cc) Briggs (recoil start) (EU Only) 7½ hp (250cc) Briggs (recoil start) (N/A in EU) 10hp (306cc) Briggs (recoil start) 4kW (400v or 230v) electric (EU Only)



See Page 14 for complete technical data on all Frontier sawmills.

The Most Popular All-Purpose Personal Portable Sawmill



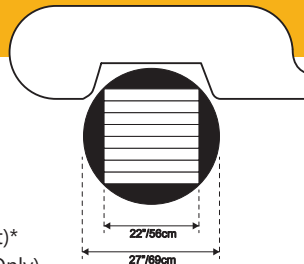
The Frontier OS27 is our reliable mid-size sawmill with even more horse-power to serve your milling needs.

Capable, dependable, and strong, the OS27 is a muscular work-horse, ready for almost any job you can think of, with greater log capacity and an electric start option.

This could be the perfect mid-size choice for you!

OS27 TECHNICAL DATA OVERVIEW

Log Diameter	27" (69cm)
Log Length	11' (3.4m) (or longer with extensions)
Board Width	22" (56cm)
Power Selections	13½ hp (420cc) Briggs (recoil start) 13½ hp (420cc) Briggs (electric start)* 5½ kW (400v or 230v) electric (EU Only)



See Page 14 for complete technical data on all Frontier sawmills.

* Battery not included



The World's BEST Portable Sawmill Value



➤ If you're looking for the biggest, toughest, best value of all, you've found it... **The Frontier OS31** is the one for you if your trees, dreams and personal project goals are **BIGGER**.

Hey, we get it. You don't have to be a full-time pro sawyer to need (or want!) a machine capable of tackling larger logs and heavier jobs. You're serious and you want bigger equipment to get er' done.

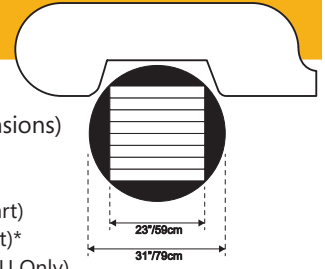
The Frontier OS31 maximizes the bang you get for your sawmilling buck.

And then...there's those bragging rights.



OS31 TECHNICAL DATA OVERVIEW

Log Diameter	31" (79cm)
Log Length	11' (3.4m) (or longer with extensions)
Board Width	23" (59cm)
Power Selections	13½ hp (420cc) Briggs (recoil start) 14hp (440cc) Briggs (electric start)* 5½ kW (400v or 230v) electric (EU Only)



See Page 14 for complete technical data on all Frontier sawmills.

* Battery not included

// ACCESSORIZE YOUR FRONTIER



TRACK EXTENSION (7FT – 2.1M)

Standard, your Frontier mills up to 11 feet (3.4m). To mill 18 feet (5.5m), add one extension. Or, add as many extensions as you want to mill logs of any length. Each extension bolts permanently to the end of your existing log deck.

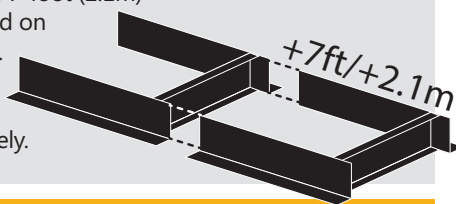
(OS31: Item # OS31-41130)

(OS27: Item # OS27-41130)

(OS23: Item # OS23-41130)

Note: Maximum of one 7-foot (2.1m) extension recommended on trailer-equipped model.

Additional log rest and log dog clamp assemblies sold separately.



1 TRAILER/SUPPORT JACK PACKAGE

Tow your Frontier on roads* and through your woodlot right to your sawing site. When you get there, quickly and easily level your log deck with the adjustable support jacks. Package includes the all-steel and powder-coated sub-frame structure including connecting brackets, a solid 1400 pound-rated single axle, two 12" (30.5cm) wheels, quick-disconnect drawbar, highway running lights, wiring harness, safety chains, 2" (50mm) coupler and 6 support jacks.

(Item # OS-41150)

Note: Maximum of one 7-foot (2.1m) extension recommended on trailer-equipped model. Additional sub-frame extension/support jack package required to support the extension sold separately.

AUTO-BLADE LUBE SYSTEM



Automate the blade lubrication system on your Frontier. Water automatically flows when you activate the throttle and stops when you release. Saves two operator functions for each board you cut. **(Item # OS-WLKIT)**

2 TRAILER SUB-FRAME EXTENSION & 2 SUPPORT JACKS

Supports a track extension installed on your trailer-equipped Frontier. Package includes 7-feet (2.1m) of powder-coated steel sub-frame structure, two support jacks, connecting brackets and hardware. **(Item # OS-41150-B)**

3 CAM DOG

Ideal for instant clamping of squared cants and boards with a quick push of the handle. Use the standard log dog to clamp your log in the round and the cam dog to clamp squared beams and boards. **(Item # OS27-CD01)**

4 LOG DOG (CLAMP) KIT

Your Frontier comes standard with a log dog clamp assembly. Add an additional log dog clamp to support longer logs or logs of different lengths. Package includes a log dog including screw crank, bar, brackets and hardware.

(OS27 & OS31: Item # OS27-LDKIT)

(OS23: Item # OS23-LDKIT)

Note: Log rest assembly sold separately.



* **NOTE re: Trailer Packages** Verify with your local vehicle licensing bureau/highway traffic regulations authority what licensing requirements and/or operational restrictions, if any, are applicable to towing the sawmill on public roads in your area. Some European countries prohibit towing the sawmill with the optional trailer package on public roads or prescribe particular rules, requirements and speed limits.



1

1 LEVELING LEGS

For stationary milling operations, support your sawmill with a set of leveling legs custom-designed specifically to support the Frontier log deck. Each leg is fitted with a micro-adjust foot for more precise log deck leveling. Package includes 10 leveling legs and fastening hardware. **(Item # OS-41170 for set of 10)**

Note: Additional set of four leveling legs required to support each track extension sold separately. **(Item # OS-41170-B for set of 4)**



2A

2B

2A LOG LOADING RAMP PACKAGE

Roll logs onto your sawmill from the ground or your log staging deck. Each ramp features steel grips to give your logs better traction against slipping. Removable for quick stowage after loading. Package includes 2 loading ramps.

Note: To load mid-size to larger logs, and to make loading even easier no matter the log size, equip your mill with the log loading winch system (sold separately).

(Item # OS-41400-A)

2B LOG LOADING WINCH SYSTEM

Load and roll logs onto your sawmill easier and more securely whether sawing by yourself or with a friend. Pass the winch cable over and around the log, connect it to the log deck frame, and operate the winch – the log rolls up your ramps onto the bed. It also helps you rotate your log on the bed to change the face between cuts, and will hold the log against the rests while you clamp it. Package includes a winch, mast/boom, receiver and log-rotating hook.

Note: Log loading ramps sold separately.

(Item # OS-41400-B)



3

3 TOE BOARD (MANUAL)

Trees are wider at the butt making it hard to saw parallel to the heart of the log. Shimming can be time-consuming. Compensate for taper to mill true, high-value boards fast and easy. Add a toe board to one end of your sawmill to raise the tapered end of your log to the perfect height and hold it for sawing. Manually-operated pivoting ratcheted mechanism is ideal for small to mid-size logs. Package includes one toe board, mounting brackets and fastening hardware.

(Item # OS-41285-LD)

LOG REST KIT

Your Frontier comes standard with two log rest assemblies, including short and long log rest posts. Add an additional log rest station to support longer logs or logs of different lengths. Package includes a bracket, one each short and long log rest post and hardware. **(Item # OS27-LRKIT)**

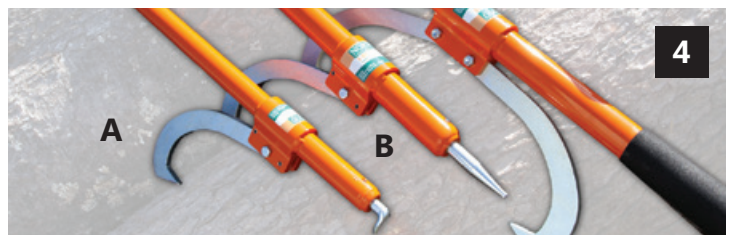
Note: Log dog (clamp) assembly sold separately.

STAINLESS STEEL BUNK CAPS

Protect your valuable hardwoods against staining. Caps fit OS27 model and fasten to the top of your central load-bearing cross bunks under your log. Package includes 3 caps and fastening hardware. (Come standard on the OS31; optional for OS27.) **(Item # OS-SSBCS for set of 3)**

Note: Additional cap required to cover each extension cross bunk sold separately.

(Item #OS-SSBCS-B for set of 2)



4

4A CANT HOOK (30"–75CM)

To turn and roll logs while on the mill. This cant hook is nimble and easy to handle. Grips 8"-32" (20cm-80cm) diameter logs. **(Item # MS030)**

4B PEAVEYS

Indispensable for rolling logs around the woodlot and onto your mill. Jab the peavey point into the ground to gain extra leverage for log rolling. Grips 8"-32" (20cm-80cm) diameter logs.

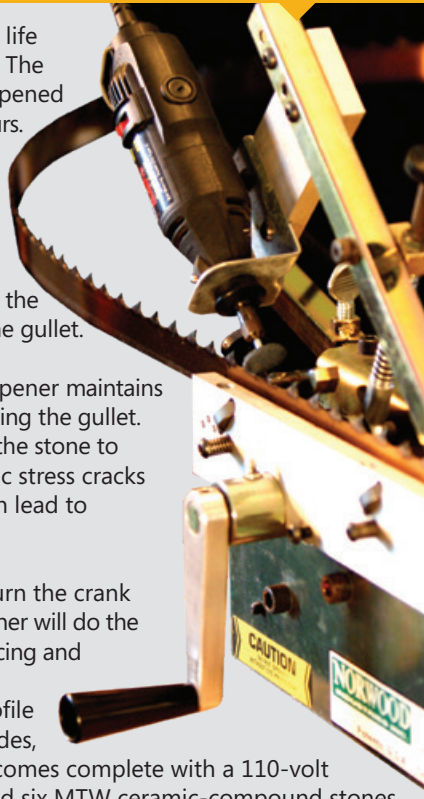
FRON-PV042: Peavey (42" – 105cm long) - Aluminum Handle
FRON-PV060: Peavey (60" – 150cm long) - Aluminum Handle
FRON-PV048-W: Peavey (48" – 120cm long) - Wood Handle

STANDARD SHARPENER

Quality lumber and blade life depend on a sharp blade. The full profile should be sharpened at least every couple of hours. Most sharpeners and re-sharpening services only treat the tooth face. This leaves the blade vulnerable to microscopic stress fractures that form at the root of the tooth and in the gullet.

Norwood's Standard Sharpener maintains the full tooth profile including the gullet. This unique action allows the stone to gently remove microscopic stress cracks that, if left unchecked, can lead to premature blade failure.

Semi-automatic, simply turn the crank and the Norwood Sharpener will do the rest, simultaneously advancing and profiling the entire blade. Factory-configured to profile Sabretooth 7/8" pitch blades, the Norwood Sharpener comes complete with a 110-volt high-speed rotary tool and six MTW ceramic-compound stones which need no dressing or truing before use. **(Item # 41180)**



SabreTooth BLADES

Norwood's premium-quality, flex-back SabreTooth band blades deliver dependable performance cutting. They are made of superior high-carbon U.S. steel with precision-ground tooth profile, state-of-the-art induction tooth hardening and tight-tolerance balanced set.

Conveniently available in flat-packed boxes of 5 or 10, all Sabretooth blades available for Frontier are 1 1/4" x 7/8" pitch. 10° face angle are ideal for all-purpose-sawing of softwoods and hardwoods. 7° are specifically designed for hardwoods and frozen wood, but are also suitable for mixed sawing.

To choose your blades:

1. Find the correct length for your Frontier model.
2. Select your preferred face angle (10° or 7°).
3. Choose your box quantity (5 or 10).

Engine Maintenance Packages

Because your sawmill engine runs in harsh conditions, it's important to service it regularly so your mill runs at peak performance. That means changing oil, filters and plugs at least yearly, and more often if you mill a lot. Conveniently order all the parts you need in one easy step.



Engine Kit	Air Filter	Pre-Cleaner	Fuel Filter	Oil Filter	Spark Plug	Item No.
BRIGGS 13hp	•	•			•	(ENGP-KIT13BS)
KOHLER 14hp	•	•	•		•	(ENGP-KIT14KO)

Model	LENGTH	FACE ANGLE	BOX QTY.	ITEM #
OS27 OS31	144"	10°	10	BLDS-ST114X144-78-10
	144"	10°	5	BLDS-ST114X144-78-10-B
	144"	7°	10	BLDS-ST114X144-78-07
	144"	7°	5	BLDS-ST114X144-78-07-B
OS23	129"	10°	10	BLDS-ST114X129-78-10
	129"	10°	5	BLDS-ST114X129-78-10-B

IMPORTANT: In all cases, regular and precise blade maintenance is critical to milling straight, smooth lumber and prolonging blade life. Sharpen your blades at least every couple of hours of milling and reset the teeth regularly. Sorry, there is no warranty on consumable items such as belts, blades or bearings.

CHECK OUT ALL THE IMPRESSIVE FEATURES OF FRONTIER SAWMILLS:



EASY-ACCESS BLADE CHANGES



PATENTED AUTO-LOCKING SAWHEAD & EZ BLADE TENSION



PATENTED LOWER CARRIAGE SYSTEM



Log Diameter (Maximum)	23" (59cm)	27" (69cm)	31" (79cm)
Log Length (Standard)	11' (3.4m)	11' (3.4m)	11' (3.4m)
Board Width (Maximum)	20" (51cm)	22" (56cm)	23" (59cm)
Additional Track Extensions (multiple possible)	7' (2.1m)	7' (2.1m)	7' (2.1m)
Power Selections	7 hp (208cc) Briggs (EU Only) 7½ hp (250cc) Briggs (N/A in EU) 10hp (306cc) Briggs 4kW (400v S1) electric (EU Only)	13½ hp (420cc) Briggs 13½ hp (420cc) Briggs (electric start) 5½ kW (400v S1) electric (EU Only)	13½ hp (420cc) Briggs (recoil) 14hp (429cc) Kohler (electric start) 5½ kW (400v S1) electric (EU Only)
Patented Laminated Sawhead	✓	✓	✓
Patented Auto-Locking Sawhead	✓	✓	✓
Variable Depth Selection (vs. Limited pre-set cogged)	✓	✓	✓
EZ Blade Tension (Independent of bandwheel alignment)	✓	✓	✓
Patented Auto-Locking Adjustable Guide	✓	✓	✓
Chip-Extractor-Compatible Sawdust Exhaust Chute	✓	✓	✓
Leveling Feet	✓	✓	✓
Blade Lube (manual)	✓	✓	✓
Stainless Steel Bunk Caps	-	Optional	✓
Cam Dog	Optional	Optional	✓
Trailer System	Optional	Optional	Optional
Patented Auto-Lube System	Optional	Optional	Optional
Track Length (Standard before extensions)	14' (4.3m)	14' (4.3m)	14' (4.3m)
Track Width	32 ¼" (82cm)	37" (94cm)	37" (94cm)
Blade	129" (327cm) x 1 ¼" SabreTooth	144" (366cm) x 1 ¼" SabreTooth	144" (366cm) x 1 ¼" SabreTooth
Bandwheels	16" (41cm) cast-iron	19" (48cm) cast-iron	19" (48cm) cast-iron
Carriage Configuration	Rigid 4-post with patented laminated lower frames	Rigid 4-post with patented laminated lower frames	Rigid 4-post with patented laminated lower frames
Blade Engagement	Centrifugal clutch	Centrifugal clutch	Centrifugal clutch
Blade Guide System	Fixed & adjustable	Fixed & adjustable	Fixed & adjustable
Blade Guides	Machined pillow-block with rear-thrust bearing	Machined pillow-block with rear-thrust bearing	Machined pillow-block with rear-thrust bearing
Carriage Wheels	Machined with sealed bearings	Machined with sealed bearings	Machined with sealed bearings
Log Rests	Long and short (x2)	Long and short (x2)	Long and short (x2)
Log Clamp	Screw-dog (x1)	Screw-dog (x1)	Screw-dog (x1)
Depth-of-Cut Scale	2", 1", 9/8", 6/4", 3/4"	2", 1", 9/8", 6/4", 3/4"	2", 1", 9/8", 6/4", 3/4"
Finish	Powder-coat & zinc-plated	Powder-coat & zinc-plated	Powder-coat & zinc-plated

OWNER REVIEWS



"I bought a Norwood Frontier about 4 or 5 months ago. I love mine. Just wish I would have bought it 20 years ago. I am 70 years old now and cut about 1000 ft a day by myself "

~ Michael Tedeton



"I bought one. It's so great!"

~ Samson Hoeta



"Great service. They let me know when it would be here and it was!"

~ Bobby Peoples



If you're looking for a sawmill for life –

Consider one of **Norwood's sawmills** built in North-America. **Norwood sawmills** deliver **ultimate versatility and value.**



If you're looking for an affordable alternative for your first portable sawmill, consider a Frontier.

Compare what you'll get with the Frontier to ANY other sawmill built outside of North America. We believe you'll soon understand the high level of Norwood quality, innovation and reliability is what sets Frontier apart from any other.

You can be assured, the same level of integrity and attention to detail will be yours to enjoy in the Frontier sawmill.

Call 1-800-408-9995
for more information.

Or visit us at
FrontierSawmills.com



THERE'S A REASON NORWOOD IS THE GLOBAL LEADER IN PORTABLE SAWMILL INNOVATION.

Forest. Fun. Freedom.

U.S.A.

Norwood Sawmills USA Inc.
730 Young Street, Suite 900
Tonawanda, NY 14150
800-408-9995
Tel: 705-325-0030

CANADA

Norwood Industries Inc.
2267 15/16 Side Road East
Oro-Medonte, ON L0L 1T0
800-408-9995
Tel: 705-325-0030

AUSTRALIA

Official Frontier Dealer

Norwood Sawmills Australia
6 Dignity Close
Gosford 2250
Australia
NorwoodAustralia@NorwoodSawmills.com
Tel: 1300 406 984



Get in TOUCH

1-800-408-9995

FrontierSawmills.com

info@FrontierSawmills.com

