



HAND-FED CHIPPERS • STUMP GRINDERS • ATTACHMENTS • WHOLE TREE CHIPPERS • THE BEAST® HORIZONTAL GRINDERS • TRACK CARRIERS



Bandit
INDUSTRIES, INC.

FULL PRODUCT LINE

AN OVERVIEW OF PRODUCTS OFFERED BY BANDIT INDUSTRIES, INC.



THEN

The year was 1983. The very first Bandit® chipper was built in a 6,000 square-foot converted repair shop, with the assistance of just six employees. That first machine was the Model 100 Brush Bandit™—a 12-inch capacity, hand-fed disc style chipper (shown here).

Today, Bandit's complete product lineup offers more than 50 different machines to choose from, each packing the reliability, durability, efficiency, and production that have made Bandit hand-fed chippers world famous. All Bandit equipment utilizes welded construction with the highest grade materials available.

And when it comes to options, nobody offers more personalization than Bandit. It's easy to see why more than 50,000 Bandit machines have been sold in over 50 countries. And it's easy to understand why more professionals trust Bandit for their wood waste processing needs.

Join the Bandit family. Call your authorized Bandit dealer today!



NOW

Intimidator™ 18XP
Drum-Style Hand-Fed Chipper

BANDIT BUILDS YOUR BOTTOM LINE.

Bandit equipment is well-known and respected throughout the world. They're the best performing wood processing machines on the market, designed to meet the demands of hard-working professionals year after year. Every Bandit machine is built by specialized teams using the highest grade components with solid welded construction. No corners are cut; no compromises are made. And when customers have feedback on designs and features, Bandit listens. That's how we build equipment. That's how we build relationships. That's how we help you build your bottom line.

BANDIT INDUSTRIES CORE VALUES

Honesty and Integrity - We hold ourselves to the highest integrity and ethical behavior and deliver what we promise. We strengthen our reputation through trust. Our dealers, customers, suppliers, community and employees must be able to trust what we say and be confident that we will keep our commitments.

Performance Excellence - Bandit's dedication to quality, performance and customer support is what differentiates us from the competition. It is our employees' personal pride and customer focus that continuously drives us to improve our processes and the products and services we provide. Our continued success depends upon addressing the needs of our employees and exceeding the expectations of our dealers and customers.

Teamwork - Bandit's diverse set of talents, thinking and opinions is what makes our team strong. We respect and value differences in opinions, experiences and backgrounds. We know that only by working together, we can produce better results than any one of us can achieve on our own.

Commitment - We make meaningful commitments to each other and those with whom we work and serve. We are committed to providing a safe, personally satisfying work environment for our employees. The commitment we share is essential to meet the needs of our dealers and customers. It is our duty to carry forward the Bandit legacy.

THE BANDIT BACKBONE™ PRODUCT SUPPORT DEPARTMENT: 888-847-7807

The Bandit Backbone is Bandit's commitment to customer service and support. It's always been a cornerstone of Bandit's philosophy, and today that backbone is stronger than ever. If you own a Bandit machine—regardless the age, hours, or warranty status—the Bandit Backbone is here to support you.

FREE TECHNICAL SUPPORT

When you call your nearest authorized Bandit dealer or the product support department, you'll be connected to a team of well-trained Bandit veterans with specialized experience. These specialists can provide guidance on everything from machine functions to maintenance procedures, electrical systems, and much more. This service is available to anyone, regardless of the machine, its age, or warranty status. And it's free of charge.

PARTS AND SERVICE WHEN YOU NEED THEM MOST

The Bandit Backbone includes factory parts support and both parts and service support from over 200 Bandit authorized dealers worldwide. When problems arise, Bandit is committed to getting you back up and running with minimal downtime.

DURABILITY, PERFORMANCE & PRIDE: THE BRUSH BANDIT™ LEGACY

FOR OVER 30 YEARS, BANDIT® HAND-FED CHIPPERS HAVE BEEN AT THE CORE OF SUCCESSFUL TREE CARE COMPANIES AROUND THE WORLD. They are designed to be the best performing chippers on the market, and to meet the demands of hard-working professionals year after year. Every Bandit hand-fed chipper is built by specialized teams using the highest grade components with solid welded construction. They're simply built to be the best.

That's why it's no surprise to see Bandit hand-fed chippers still serving front-line duty for ten or even twenty years, racking up thousands of hours of use. That's why Bandit hand-fed chippers have the best resale value of any chipper on the market. That's why tens of thousands of tree service professionals rely on their Bandit chippers every day to get the job done quicker with minimal downtime for maintenance. It's why Bandit equipment owners take such pride in their machines. And it's why Bandit hand-fed chippers lead the industry for durability, performance, customer satisfaction, and brand loyalty.



WINCH OPTION



LOADER

OPTIONS GALORE

Customization has always been a hallmark of Bandit equipment. A wide range of colors and diesel or gasoline engine options allow companies to match chippers to their fleet.

Numerous convenience features and options such as winches, heavy-duty welded infeed trays, hydraulic lift cylinders for feed systems, hydraulic discharge systems, and much more are available.

Self-propelled track undercarriages are extremely popular, allowing operators to take the chipper straight to the trees. On larger chippers, built-in loader systems help process large material without the need for additional loading equipment.

DISC- OR DRUM-STYLE WITH CAPACITIES FROM 4" TO 21"

Whether you prefer the cutting action of a disc or the crushing power of a drum, Bandit offers well over a dozen models and a broad range of chipping capacities in both styles to choose from. Bandit hand-fed chippers feature the industry-proven Slide Box Feed System*, providing direct down pressure to pull in, crush and compress limby branches and trees with minimal-to-no trim work. Feed wheels are positioned within inches of the chipping surface for better chip quality and fewer hang-ups. And proprietary designs in Bandit disc/drum housings and discharge chutes throw chips harder, using less energy to pack more chips per load for fewer trips to the dumpsite.

**Not available on Models 65XP, 75XP, 95XP, 490XP*



MODEL 255XP



INTIMIDATOR™ 12XP



INTIMIDATOR™ 21XP

BACKED BY A FIVE-YEAR GUTS WARRANTY

Any manufacturer can say they have the toughest equipment, but Bandit backs it up with a five-year GUTS warranty on every new Bandit hand-fed chipper. The warranty covers the Bandit-fabricated components of the disc/drum assembly and the Slide Box Feed System, giving you years of worry-free operation.

COMMITMENT TO SAFETY

Bandit Industries continually exceeds ANSI and OSHA safety requirements and recommended practices, and is very proud to be an industry leader when it comes to safety in the tree care, logging, wood and waste processing industries. Bandit hand-fed chippers come standard with features such as Last Chance Cables, a pusher paddle for feeding small material into the chipper, hood lock pin, engine-disable plug, safety control bar, safety decals, and much more.



MODEL 250XP

WHO USES BANDIT CHIPPERS?

Professional arborists, tree care companies, utility line contractors, orchards, municipalities, park and maintenance teams, and many more!



INTIMIDATOR™ 15XP

COMPETITIVE 22-1/2" DRUM
Cuts primarily across the grain



BANDIT'S 37" DRUM
Cuts primarily with the grain



DIESEL ENGINE PRICES GOT YOU DOWN?

Choose from a range of gasoline engines up to 165 horsepower!

37" DIAMETER CHIPPING DRUM

is larger than the drum used by most rival manufacturers. The larger drum spins at a lower RPM, generating more torque while chipping most material with the grain of the wood for increased production, improved fuel economy, and reduced machine vibration.

HIGH PRODUCTION WITH LOW MAINTENANCE

Expect significantly less maintenance and downtime with a Bandit hand-fed chipper. Heavy-duty materials and components with solid welded construction help these machines withstand the daily rigors of chipping. It's not uncommon for a Bandit hand-fed chipper to be on front-line duty for more than 10 years and 10,000 hours.



MODEL 75XP WITH TRACK UNDERCARRIAGE

Track undercarriages are available for any Bandit hand-fed chipper! These units are extremely popular for land clearing, fire mitigation, and remote jobs where towable chippers can't reach.

INTRODUCING THE XPC-SERIES CHIPPERS

12" capacity (12XPC) or 15" capacity (15XPC)

Bandit XPC chippers are heavy on chipping power while limiting optional add-ons to reduce the weight and size and improve the maneuverability. This makes them ideal for utility companies and rental customers who crave a chipper with the durability of a Bandit in a lighter package.

DRUM-STYLE XPC CHIPPERS

12" - 15" DIAMETER CAPACITY

Intimidator™ 12XPC 12" capacity	49.4 - 89 HP
Intimidator™ 15XPC 15" capacity	49.4 - 142 HP

HAND-FED CHIPPERS

DISC-STYLE CHIPPERS

6" - 9" DIAMETER CAPACITY

Model 65XP 6" capacity	25-49.6 HP
Model 75XP 7" capacity	25-49.6 HP
Model 90XP 9" capacity	37-89 HP
Model 95XP 9" capacity	37-89 HP

12" - 18" DIAMETER CAPACITY

Model 150XP 12" capacity	74-130 HP
Model 200UC 12" capacity	74-89 HP
Model 200XP 12" capacity	74-130 HP
Model 250XP 12" capacity	122.5-147 HP
Model 255XP 15" capacity	122.5-174 HP
Model 280XP 18" capacity	147-225 HP

DRUM-STYLE CHIPPERS

4" - 19" DIAMETER CAPACITY

Model 490 4" Capacity	18 HP or PTO
Intimidator™ 12XP 12" capacity	49.4-130 HP
Intimidator™ 15XP 15" capacity	122.5-165 HP
Intimidator™ 18XP 18" capacity	122.5-215 HP
Intimidator™ 19XP 19" capacity	147-225 HP
Intimidator™ 21XP 21" capacity	200-315 HP



MODEL 12XPC

STUMPING THE COMPETITION FOR OVER A DECADE

Bandit's current stump grinder lineup is the culmination of more than 12 years of development, implementation, real-world experience, and most importantly, collaboration with Bandit customers to continually fine-tune designs. Durable construction provides years of reliable service, while innovative features such as expanding track undercarriages and beltless hydrostatic direct-drive give Bandit® stump grinders a clear edge over the competition.

YOUR JOB DOESN'T STOP AT THE STUMP

Innovation and experience is nothing without variety. That's why Bandit offers 11 stump grinder models, ranging from compact self-propelled units to large track machines capable of grinding massive stumps in a matter of minutes. The size of the job doesn't matter; Bandit has a stump grinder to fit your needs.



MODEL 2250R

CHOOSE FROM MANY OPTIONS & ENGINES

Convenience items such as wireless remote control and grading blades are available on most Bandit stump grinders. Gasoline or diesel engines are also available, ranging from 25- to 165-horsepower.



MODEL 2900T WITH GAS ENGINE

REVOLUTION CUTTER WHEEL

JOIN THE REVOLUTION: GRIND FASTER WITH LESS CLEANUP

The Revolution cutter wheel delivers smoother, deeper cuts with superior chip containment and lower operating costs. The secret is its spiral design and aggressive teeth that not only cut better than anything else on the market, but have a substantial lifespan. The Revolution cutter wheel is standard on nearly all Bandit stump grinders.

PREFER GREENTEETH FOR YOUR STUMP GRINDER?

Bandit grinding wheels with Greenteeth are optional.



MODEL 2550

SELF-PROPELLED WITH FLOTATION TIRES OR TURF-FRIENDLY TRACKS

Choose between a variety of large and small stump grinders with flotation tires or tracks for all-terrain capability. Track undercarriages for the Model 2650T and 2900T can expand for stability, then retract to fit through backyard gates. Bandit's high-power drive systems have multiple speeds to get you to and from the stumps quicker – even the Bandit HB20 Sidewinder handlebar stump grinder is self-propelled for easy operation. Just engage and go.

MODEL ZT1844 STUMP GRINDER

The ZT1844 is a compact, maneuverable and extremely capable track stump grinder that's an excellent rental machine for both homeowners and stump grinding professionals. With either a 26- or 38-horsepower EFI gas engine, grinding depth of 12 inches and a 44-inch side-to-side cutter wheel swing, it has the power and performance that professionals need. At 29 inches wide this machine easily fits through backyard gates, and it's user-friendly with simple controls, turf-friendly tracks and zero-turn capability.



MODEL ZT1844



MODEL 3100 TOWABLE

Available with a 122-HP Tier 4 diesel, 165-HP gas V8 power and belt drive, the Model 3100 is high-production, cost-effective stump grinding powerhouse.



MODEL 2650 TRACK

HOW CAN A BANDIT STUMP GRINDER SAVE YOU TIME?

- **Faster Clean Up.** Better chip containment means less mess at the site.
- **Less Maneuvering.** A wide swing arc means less repositioning at the stump.
- **Precise Movement.** Our self-propelled units do not creep back during grinding.
- **Easy Transport.** Custom transport trailers are made with Bandit stump grinders in mind.

STUMP GRINDERS

SELF-PROPELLED HANDLEBAR STUMP GRINDERS			TRACK & TOWABLE TOWABLE STUMP GRINDERS		
Model HB20	15" Diameter Wheel	25 HP	Model 2600	21" Diameter Wheel	67 - 74 HP
			Model 3100	31" Diameter Wheel	122.5-165 HP
SELF-PROPELLED GRINDERS			TRACK STUMP GRINDERS		
Model ZT1844	18" Diameter Wheel	26.5 - 38 HP	Model 2550T	21" Diameter Wheel	49.6 HP
Model 2250R	21" Diameter Wheel	25 HP	Model 2650T	21" Diameter Wheel	67 - 74 HP
Model 2550	21" Diameter Wheel	35 - 49.6 HP	Model 2900T	24.5" Diameter Wheel	165 HP
Model 2650	21" Diameter Wheel	67 - 74 HP			
Model 2890SP	24.5" Diameter Wheel	165 HP			

BANDIT® WHOLE TREE CHIPPERS ARE KINGS OF THE FOREST

For 25 years, Bandit whole tree chippers have been the go-to chippers of choice for logging companies, saw mills, land clearing operations and more. Time and again these machines have proven their ability to throw chips harder while using less fuel, packing more chips per load. No other manufacturer can match Bandit's durability, longevity and reliability – forged through heavy-duty components, solid welded construction, and supported by a five-year GUTS warranty.

SERVE MULTIPLE CHIP MARKETS

Available on select Bandit drum-style chippers, micro chip drums can produce uniform micro chips ¼" in size for pellet production, or be easily converted to produce standard ¾" to 7/8" chips for fuel wood markets. Need large 2" chips for fuel or metallurgical markets? Bandit whole tree chippers can do that as well.

FIVE-YEAR GUTS WARRANTY

Bandit whole tree chippers are built incredibly strong, utilizing extensive welded assembly with large disc/drum shafts and thoroughly reinforced chipping drums. That's why every new Bandit whole tree chipper is backed by a five-year GUTS warranty that covers the Bandit-fabricated disc/drum assembly and the Slide Box Feed System. Contact Bandit for warranty details.



MODEL 3590 WITH MICRO CHIP DRUM



MICRO, STANDARD AND MAXI CHIPS

TRACK UNDERCARRIAGES

Bandit introduced the industry's first self-propelled track whole tree chipper in 1991. Today, industry-proven CAT® steel-track undercarriages are available on every Bandit whole tree chipper, giving these machines all-terrain capability to serve a range of specialty clearing applications such as power line maintenance, oil/gas exploration or new road construction. Self-propelled units are also great for logging operations, making it easier to position the chipper on the landing. Operated via wireless remote, a single operator in a loader can control all chipper functions.



MODEL 3090 WITH TRACK UNDERCARRIAGE



MODEL 2290 DISCHARGE

LEGENDARY THROWING POWER

Many rival chippers use power-robbing auxiliary chip throwers to fill trailers, but Bandit whole tree chippers need no such help. Proprietary designs in Bandit discharge systems allow these machines to aggressively throw chips, packing more tons per load while using less fuel.

DESIGNED TO PERFORM. BUILT TO LAST.

Whether you prefer disc or drum chippers for producing paper mill or fuel wood chips, towable or self-propelled track machines, compact 18" chippers or unstoppable 36" capacity monsters with engines over 1,000 horsepower, Bandit can build the whole tree chipper to meet your needs.



MODEL 3090

POWERFUL SLIDE BOX FEED SYSTEM

A hallmark of Bandit chippers since 1983, Bandit whole tree chippers feature the proven Slide Box Feed System which provides direct down pressure to material entering the machine. Combined with multiple feed wheels, this feed system delivers incredible pulling, crushing and compressing power to process large whole trees, wide forks and limby tops with virtually no trimming required.

BANDIT'S CLEAN-FEED SYSTEM

virtually eliminates chip carry-around so there's no mess to clean up behind the chipper. It also increases chip yield per-load by approximately 5%. *It's like giving yourself a 5% raise!*

BIOMASS MARKETS PREFER BANDIT CHIPS

for a range of boiler types and end-uses, including direct-fire and co-fire applications. Bandit chips routinely pass even the most stringent chip specs, bringing additional revenue to chip producers. Pulp and paper mills prefer chips from Bandit disc-style chippers due to their consistent size and thickness.

OPTIONAL OPERATOR CABS AND LOADERS

are available for any Bandit whole tree chipper. Combine it with a self-propelled track undercarriage for the ultimate self-sufficient whole tree chipper!



MODEL 2590



MODEL 2400XP



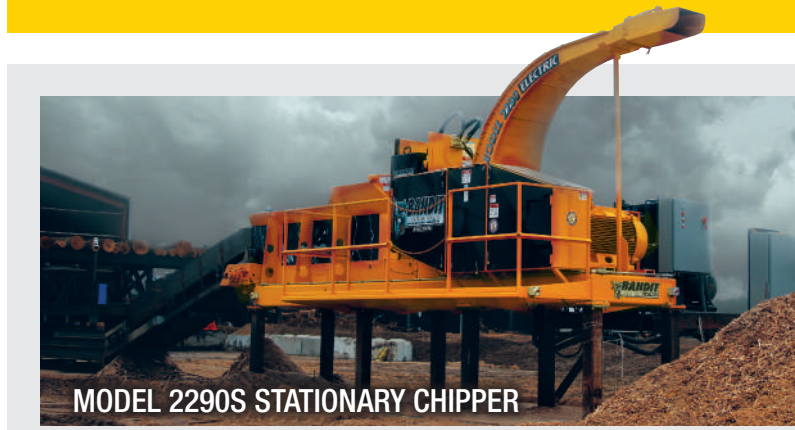
MODEL 2590 WITH CAB & LOADER

FILL 50' TRAILERS IN SIX MINUTES

with the 1,200-horsepower Model 3590XL. With a 36" chipping capacity, this amazing whole tree chipper has been documented to double production versus smaller chippers without increasing fuel usage.



MODEL 3590XL



MODEL 2290S STATIONARY CHIPPER

EFFICIENT, HEAVY-DUTY STATIONARY CHIPPERS

Bandit's new line of stationary sawmill and chip mill chippers use the proven chipper designs and same thorough welded construction that goes into all Bandit machinery. These chippers are built heavier than traditional sawmill / chip mill chippers, delivering a higher chip quality and smoother operation with better efficiency and greater dependability.

The stationary chipper packages include Bandit's Slide Box Feed System to control the flow of wood within inches of the chipper knives, increasing chip quality and uniformity. A bottom discharge is also available for dumping chips directly to a chip conveyor. Power comes from proven WEG electric motors with soft-start starters to provide a dependable power package that's easy to install. Diesel engine options are also available.

WHOLE TREE CHIPPERS

DISC-STYLE CHIPPERS		
18" - 24" DIAMETER CAPACITY		
Model 1850	18" Capacity	250 - 350 HP
Model 2400XP	24" Capacity	765 HP
STATIONARY SAWMILL / CHIP MILL CHIPPERS		
20" DIAMETER CAPACITY		
Model 2290S	20" Capacity	300 HP

DRUM-STYLE CHIPPERS		
20" - 24" DIAMETER CAPACITY		30" - 36" DIAMETER CAPACITY
Model 20XP	20" Capacity	275-350 HP
Model 2290	20" Capacity	440-540 HP
Model 2590	22" Capacity	540-765 HP
Model 3090	24" Capacity	765 HP
Model 3590	30" Capacity	765-1,050 HP
Model 3590XL	36" Capacity	800-1,200 HP

THE BEAST® BUILDS YOUR BOTTOM LINE

THE BEAST HORIZONTAL GRINDERS HAVE CONTINUALLY EVOLVED since entering the waste reduction market in 1995, maintaining their position as the most versatile and productive horizontal grinders available. These machines are industry proven when it comes to efficiency, durability, and the quality end-product created from the patented cuttermill. The Beast regularly processes stumps, logs, brush, wet leaves, whole trees, landscape waste, pallets, railroad ties, telephone poles, sawmill waste, stubborn chunk wood, chip mill and paper mill waste, ag waste such as hay and straw, shingles, plastics, and more.

Whether producing high-quality landscape mulch, hot-mix asphalt supplement from recycled shingles, wood chips and other fibrous material for international fuel wood markets or so much more, The Beast remains the first choice for more municipalities, tree services, land clearing contractors, logging companies, recycling centers, and mill operations around the world.

THE BEAST® MODEL 2460XP

The 2460XP will out perform all other grinders in its size class. The 2460XP is equipped with a 60" wide by 30" diameter cuttermill, a 60" wide by 24" mill opening. This machine uses a 30-tooth cuttermill running Bandit's patented saw-tooth style cutterbodies that regulate the size of the tooth's bite. Most of the material is sized in the initial cut, so material exits the large screening area quicker.

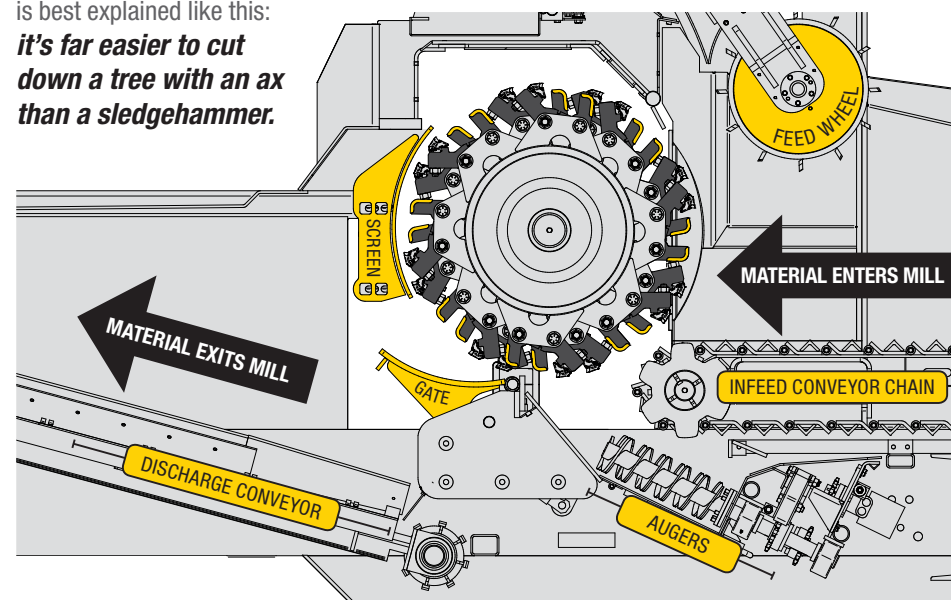


THE BEAST® MODEL 2460XP

THE BEAST PATENTED CUTTERMILL

The key to The Beast's success is its unique cuttermill. It starts with a spiral pattern of cutterbodies and rakers shaped like a chain saw tooth. These cutterbodies hold a wide variety of teeth, allowing the cuttermill to process material using a cutting / splitting action versus other recyclers that attempt to bash material through hammering and grinding. The difference is best explained like this:

it's far easier to cut down a tree with an ax than a sledgehammer.



THE BEAST® MODEL 3680XP GRINDING SHINGLES

THE BEAST FEATURES A DOWN-TURN CUTTERMILL

that works with gravity, not against it. There are many advantages to this design – material is processed quicker and easier in a single pass, creating a better end-product. There is less wear on the feed wheel, and the track-chain infeed serves as a rotating anvil that eliminates hang-ups found on rival machines with up-turn mills.

DIESEL OR ELECTRIC POWER

Choose from a wide range of diesel engines up to 1,200 horsepower, or nix the fuel and go electric. The Beast can be outfitted with heavy-duty WEG electric motors up to 1,000 horsepower. Soft-start panels and all necessary equipment are included to easily set up electric-powered units for stationary operation.

COLOR MAX AVAILABLE

The Beast® equipped with the Color Max will outperform all other grinders with coloring systems and all stand-alone coloring units.

- Use 30% less water than most other coloring systems
- Use approximately 25% less colorant than other coloring systems
- Provide better coverage with almost zero colorant leakage
- Major Production – up to 300 cubic yards per hour in a Model 3680XP



THE BEAST® MODEL 3680XP

CAT® STEEL-TRACK UNDERCARRIAGES

are available as options for every model in The Beast lineup, including the compact Model 1680XP and the overachieving Model 4680XP.



STEEL-TRACK UNDERCARRIAGE

THE BEAST® HORIZONTAL GRINDERS

TRAILER UNITS		TRACK UNITS	
THE BEAST® TRAILER UNITS		THE BEAST® TRACK UNITS	
Model 1680XP	18" Capacity 300 - 350 HP	Model 1680XP	18" Capacity 300 - 350 HP
Model 2460XP	24" Capacity 475 - 525 HP	Model 2680XP	24" Capacity 440 - 800 HP
Model 2680XP	35" Capacity 440 - 800 HP	Model 3680XP	35" Capacity 540 - 875 HP
Model 3680XP	35" Capacity 540 - 800 HP	Model 4680XP	45" Capacity 800 - 1,200 HP
Model 4680XP	45" Capacity 800 - 1,200 HP		

SERVE MULTIPLE MARKETS WITH ONE MACHINE

With numerous tooth and screen options to choose from, The Beast can easily serve a variety of markets. Produce high-quality mulch from waste wood, then switch to knives to produce screened wood chips. Equipped with the shingle grinding package, The Beast can recycle shingles for hot-mix asphalt supplement. Install an optional colorizer and produce colored landscape mulch.



THE BEAST® MODEL 3680XP

OPTIONAL PROPORTIONAL INFEED DRIVE SYSTEM

provides an infinitely adjustable feed speed, automatically matching engine load for continual feeding. The system can be easily turned off to return to normal auto-feed operation.

PRODUCTION INCREASED BY AS MUCH AS 50%

More than 30 enhancements to The Beast line in 2015 have increased production by as much as 50% in most applications.



THE BEAST® MODEL 2680XP

DEDICATED CHIPPING DRUMS

turn The Beast into a high-production chipper. Available as an 8-knife or 20-knife drum, this option effectively turns The Beast into a large, screened chipper capable of producing chips from ¼" to 2" in length.



THE BEAST® MODEL 4680XP

ACHIEVE MULCH PRODUCTION RATES OF 800 YARDS/HOUR with the Model 4680XP. With a 45" capacity and engines up to 1,200 horsepower, it's the largest horizontal grinder in The Beast line.

ADD VALUE TO YOUR SKID STEER LOADER WITH A BANDIT ATTACHMENT.



MODEL 60FM



MODEL 72FM

MODEL 60FM / MODEL 72FM

Bandit forestry mulchers are available in either a 60" or 72" wide cut. These attachments are ideal for clearing thick brush and small trees, grinding material and mulching it directly into the ground. Their compact size makes them excellent for lot clearing, landscaping projects, trail maintenance, right-of-way clearing, and selective forest thinning. The superior teeth in these mulchers were designed from years of experience in processing wood with The Beast®, providing great tooth life at an affordable price.



BANDIT MODEL SA-25

Blow stumps away with Bandit's Model SA-25, a powerful stump grinder attachment that sits on the front of any skid-steer loader that accepts a universal attachment plate. Maintenance of the SA-25 is extremely simple because the unit operates on the skid steer's existing high-flow hydraulic system. The SA-25 increases the versatility of popular machines used all over the world. This easy-to-maintain design is effective on any stump, large and small.

BANDIT SKID STEER ATTACHMENTS MAKE LAND CLEARING EASIER THAN EVER

Turn your skid steer loader into a powerful land clearing machine with Bandit stump grinding and mulching attachments. Designed in-house by Bandit, these attachments operate via the skid steer's hydraulic system and are extremely simple to use. They attach in seconds to machines using quick-attach plates, and with just a few moving parts they are very easy to maintain. Bandit skid steer attachments are built with the same high-quality materials and receive the same attention-to-detail as all Bandit machines, making them a reliable, productive, long-lasting addition to any operation using skid steer loaders.



MODEL 72FM

ATTACHMENTS

SKID STEER ATTACHMENTS

FORESTRY MULCHERS

Model 60FM	60" wide cut	30-50 Gallon Per Minute Hydraulic High Flow
Model 72FM	72" wide cut	30-50 Gallon Per Minute Hydraulic High Flow

VERTICAL STUMP GRINDERS

Model SA-25	21.625" cut depth	30 - 50 Gallon Per Minute Hydraulic High Flow
Stump Gun	22" grind depth	17+ Gallon Per Minute Hydraulic High Flow

BTC-300 TRACK CARRIER

90" FORESTRY MOWER • 44" DIAMETER STUMP GRINDER

The BTC-300 is a completely new track carrier from Bandit Industries. From its redesigned deluxe operator's cab with its outstanding visibility, lower ground pressure, and numerous mechanical updates and Tier 4 engine power, the BTC-300 delivers exceptional land clearing performance with exceptional reliability and class-leading levels of comfort. Built from extensive customer feedback and over a decade of experience with track carriers in high-production land clearing environments, the BTC-300 further builds on Bandit's vision for a high-performance, all-terrain mowing and stump grinding machine.



BTC-300 WITH STUMP GRINDER ATTACHMENT



BTC-300

AVAILABLE WITH INTERCHANGEABLE MOWING AND STUMP GRINDING ATTACHMENTS

Whether clearing acres of trees or fields of stumps, the BTC-300 can handle it with newly designed mowing and stump grinding attachments. The forestry mower features a very wide 90-inch cut and can easily take down small-to-medium sized trees. A new float feature helps the mower head ride at ground level without digging in. A patent-pending tooth and holder design aggressively processes trees, limbs and brush, mulching it all directly into the ground. The stump grinding head features a 44-inch diameter grinding wheel with a deeper reach, and it offers 30% more torque than previous models for quick efficient grinding. Switching between the attachments is extremely easy, taking less than 10 minutes in the field.



BTC-300 WITH FORESTRY MOWER ATTACHMENT



TILTING DELUXE OPERATOR CABS WITH ROPS/FOPS/OPS CERTIFICATION

Operators will not want to leave the BTC-300's luxurious, state-of-the-art operator's cab. Ballistics-grade poly-carbonate windows negate the need for window guards, providing superb visibility while still meeting ROPS/ FOPS/OPS certification. Finished interiors with rubber-isolated cab mounts create a surprisingly quiet atmosphere for operators to work, yet still allow the cab to tilt for easy maintenance access. Industry-leading HVAC systems with window and foot vents ensure cool operation in summer and plenty of warmth in winter. Additional convenience items like padded cell phone holders, 12V charging ports and oversized cup holders ensure no other operators are treated as well in any other machine.

IF YOU CAN DREAM IT, BANDIT CAN BUILD IT.

Your operation is unique. That's why Bandit offers the most comprehensive range of wood processing equipment, including specialty machines and custom-built designs to fit your specific needs. Contact Bandit to learn more about custom designs.

MODEL 1690 CONVENTIONAL DRUM CHIPPER

Still popular with utility line crews and maintenance companies with large fleets, this low-maintenance chipper forgoes a feed system. Material is pulled in directly by the 16" diameter four-knife chipping drum and features a 10" by 16" throat opening. Chips exit through a stationary discharge, with an auxiliary side discharge optional.



MODEL 1690 CONVENTIONAL DRUM CHIPPER



MODEL 200UC PTO CHIPPER

PTO CHIPPERS

PTO-powered chippers are ideal for orchards, farms or estates where tractors or other PTO-capable vehicles are already in-use for grounds maintenance. PTO chippers are available as towable or tractor-mount with a three-point hitch. New 9" and 12" PTO chipper options are driven via PTO shaft from a chip truck, and are available with either a rear or curb-side feed.



MODEL 65 CHIPPER / CHIP BOX COMBO UNIT

CHIPPER / CHIP BOX COMBOS

Available with Bandit 6" and 9" capacity chippers, these units feature a tilting chip box with the chipper mounted on a turntable. The all-in-one design eliminates the need for a towing vehicle with a chip box.

MODEL 490XP DROP-FEED CHIPPER

The smallest Bandit chipper is big on performance! Its easy-to-use drop-feed design accommodates material up to 4" in diameter, making it ideal for converting small prunings into chips for gardens. Power comes from an 18-horsepower gas engine turning a small drum, and it's available in numerous configurations including manual-push, towable, and as a PTO unit with a three-point hitch.



MODEL 490XP



CUSTOM BLUE INTIMIDATOR™ 18XP



CUSTOM PINK INTIMIDATOR™ 18XP

CUSTOM COLORS

Match your Bandit to the rest of your fleet! Six standard colors are available to choose from, with unlimited custom colors available upon request.



SPECIALTY EQUIPMENT

CONVENTIONAL CHIPPERS

CONVENTIONAL DRUM CHIPPERS

Model 1690 6" Capacity 74 or 89 HP

CHIPPER / CHIP BOX COMBO UNITS

CHIPPER / CHIP BOX COMBO UNITS

Model 65XP CB 6" Capacity 25 - 49.4 HP
Model 90XP CB 9" Capacity 49.4 HP

PTO CHIPPERS

PTO UNITS

Model 65 PTO 6" Capacity
Model 90 PTO 9" Capacity Model 95 PTO 9" Capacity
Model 150 PTO 12" Capacity
Model 200UC PTO 12" Capacity Model 200 PTO 12" Capacity
Model 250 PTO 12" Capacity

DROP-FEED CHIPPERS

DROP-FEED CHIPPERS

Model 490XP 4" Capacity 18 HP and PTO option



CUSTOM WHOLE TREE CHIPPER WITH REMOTE CONTROL GRAPPLE LOADER

CUSTOM DESIGNS

Because Bandit machines are built by specialized teams and not on an assembly line, incorporating custom designs to fit unique needs is not a problem! Contact Bandit to learn more about customized equipment.



MODEL 2400XP (WITHOUT INFEED TRAY) TO PRODUCE DEBARKED OR UNDEBARKED WHOLE TREE CHIPS



WWW.YOUTUBE.COM/BANDITCHIPPERS • WWW.TWITTER.COM/BANDITINDUSTRIES • WWW.FACEBOOK.COM/BANDITINDUSTRIES

All specifications, dimensions, standards and options are subject to change without notice. Dimensions and weights may vary, depending on options and engines selected. Bandit Industries, Inc. reserves the right to change designs, specifications and options without prior notice. All figures shown in technical data were current at the time of printing. However, these can change as a result of further product development and regional distribution differences. Please contact your authorized Bandit dealer or Bandit Industries, Inc. for more information. Made in the USA. Printed in the USA. © 2017 Bandit Industries, Inc. All Rights Reserved.